

SPIRAL HAMMER ANCHOR

Characteristics and use methods



SPIRAL HAMMER

Technical specifications

Anchor diameter [mm]	Ø 4.5	Ø 6	Ø 8	Ø 10
Section area [mm ²]	7,8	8,0	10,0	13,0
Yield stress [MPa]	713,0	621,6	388,9	474,1
Tensile strength [MPa]	862,1	800,6	988,7	1006,3
Module - E [GPa]	179,9	175,2	163,1	143,5

Available lengths and diameters

Hammpack Spiral Hammer anchors are available in the following diameters and following lengths::

- Ø 4.5 (1m / 10m)
- Ø 6 (1m / 10m)
- Ø 8 (1m / 10m)
- Ø 10 (1m / 10m)



PRICE LIST

Diameter	Length	Price (netto)	EAN Code
Ø 4.5	1m	6,49 €	 5 903968 663452 >
Ø 4.5	10m	53,19 €	 5 903968 663575 >
Ø 6	1m	6,69 €	 5 903968 662158 >
Ø 6	10m	55,33 €	 5 903968 662141 >
Ø 8	1m	7,13 €	 5 903968 662172 >
Ø 8	10m	64,29 €	 5 903968 662165 >
Ø 10	1m	9,99 €	 5 903968 662196 >
Ø 10	10m	68,66 €	 5 903968 662189 >

Easy and secure
installation

Low cost

Low invasiveness - application
without mess and fuss

Why use ?

HAMMPACK
SPIRAL HAMMER

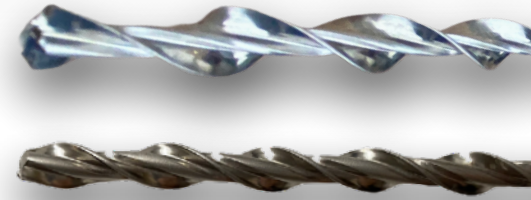
Excellent hold in compression and
tension

Increase the load bearing capacity of
walls, columns, girders, beams, slabs,
foundations

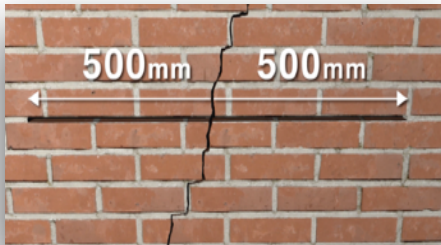
Cracks do not reappear - high
performance technology

Fast application - without
technological breaks

One-piece, stress-free stainless steel
system



STEP I CORRECTLY FURROWS CREATING



After making grooves for the anchors, dust residue should be removed from them. The cleaning process can be done with air and water spray.

The repair work should begin by making grooves in accordance with the design guidelines. It is recommended that the resulting groove should have the same length on both sides of the joint.

STEP II CLEANING THE FURROWS FROM DUST



STEP III FILLING THE GROOVE WITH MORTAR AND INSTALLING THE



The next step is to fill the groove with a first layer of mortar about 10 mm thick and place a pre-cut anchor in it.

STEP IV SECOND LAYER OF MORTAR AND FINAL STEPS



- The next stage of work is the application of the second layer of mortar and smoothing the joint with a spatula.
- Open cracks should be filled with a suitable binder.
- After about 24 hours, when the binder has dried, you can start plastering the places after the work.

GROOVE PARAMETERS

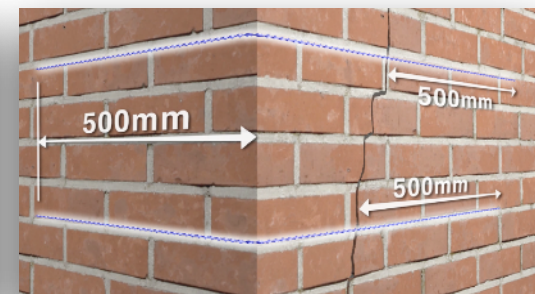
- The width of the groove should not be less than the diameter of the bar + 4mm
- The depth of the grooves should be between 35 mm and 70 mm

When installing more than one rod in the slot, repeat the steps in the above instructions analogously.



USEFUL TIPS

**REMEMBER TO KEEP THE DISTANCES BETWEEN
SUCCESSIVE FURROWS EQUAL**



**REMEMBER THE CORRECT POSITIONING OF BARS IN
THE CASE OF BROKEN FURROWS**



HAMMPACK[®]

building injection equipment

DISRTIBUTOR:

PAKERY.PL Łukasz Jóźwiak
02-690 Warsaw
POLAND
E-mail: biuro@pakery.pl
Tel: +48 690 93 0000